



REQUEST FOR PROPOSAL (RFP 10-19)

BEACH MONITORING SERVICES

1. GENERAL

The City of Folly Beach is the Local Sponsor of a federal Shore Protection Project through the US Army Corps of Engineers. Through the City's Local Cooperation Agreement (LCA) and the Operations & Maintenance (O&M) Manual regarding the federal project, the City is obligated to conduct annual beach monitoring. The City of Folly Beach ("City") is seeking proposals from qualified consultants ("Consultant") to conduct the necessary post-nourishment monitoring according to the 2018 Operations & Maintenance (O&M) Manual, Attachment A and Appendix C of the Local Cooperation Agreement (LCA), Attachment B.

The purpose of this Request for Proposal ("RFP") is to solicit proposals from various consultants, conduct a fair and extensive evaluation based on criteria listed herein, and select the candidate who can best meet the needs of the City.

2. SCOPE OF WORK

Please detail cost proposal as follows:

- a. The primary cost line for the project shall be separated into two phases: (1) Surveying, Inspection, and Data Collection, and (2) Monitoring Analysis and Reporting.
 1. Surveying, Inspection, and Data Collection
 - i. Surveys should be conducted at the 31 OCRM survey monuments shown here: <https://gis.dhec.sc.gov/bermexplorer/> and in accordance with information outlined in Section 16(b) of the O&M manual. However, contrary to the manual, the beach profiles should extend offshore to the depth of closure (not "wading depth").
 - ii. Further inspection and general observation should be conducted as shown in Appendix C of the Local Cooperation Agreement, attachment.
 - iii. Surveys, assessments, and recommendations for maintenance of 18 rehabilitated groins (14th Street East through 2nd Street West) should also be conducted according to Section 16(c) of the O&M Manual.
 2. Monitoring Analysis and Reporting should be submitted to the City and the Army Corps annually and should include a summary intended for City officials.
- b. Additional post-storm surveys and assessments may be required as needed. Please include an optional cost line for potential post-storm surveys to depth of closure at 31 monuments in Item 1(i) above.

3. PROPOSAL PROCESS

- a. Proposal packets can be picked up at the office of Accounts Payable Clerk, 2nd Floor, 21 Center Street or can be requested from Robin Brooks by phone at 843-513-1841 or email at rbrooks@cityoffollybeach.com.



REQUEST FOR PROPOSAL (RFP 10-19) BEACH MONITORING SERVICES

- b. Questions may be emailed no later than April 25, 2019 to Spencer Wetmore, City Administrator, swetmore@cityoffollybeach.com . Answers will be provided by April 29, 2019 to all who have emailed the Accounts Payable Clerk. Please note there is no pre-bid meeting for this RFP.
- c. One hard copy and one electronic copy on a flash drive must be submitted in a sealed envelope. The sealed proposal must be received in the Office of the Municipal Clerk no later than 2:00 p.m. on Monday, May 6, 2019. Sealed proposals may be hand-delivered to the Accounts Payable Clerk, Robin Brooks at 21 Center Street, 2nd Floor, or mailed to P.O. Box 48, Folly Beach, SC 29439, Attn: Robin Brooks Accounts Payable Clerk. Any proposals received after this date and time will be returned to the sender. All proposals must be signed by an official agent or representative of the company submitting the proposal. Proposals must be clearly labeled "RFP 10-19 Beach Monitoring Services"
- d. The proposals will be opened at 2:05 p.m. on May 6, 2019. All submitters are invited to be present or send a representative.
- e. Evaluation of proposals will be conducted from May 6, 2019 to May 14, 2019. The selection decision for the selected contractor will be by City Council resolution at a regularly scheduled Council Meeting on Tuesday, May 14, 2019. The winning Bidder will be notified after the City Council Meeting.

4. BID REQUIREMENTS

The proposal must include the following documents as applicable to be considered a responsive bidder. Please mark each section. Under the provisions of the Freedom of Information Act, all proposals, excluding pending legal actions will become public information. Offerors must clearly mark as "CONFIDENTIAL" each page of their proposal that could be exempt from disclosure. The City reserves the right to make the final determination.

- a. Signed Offeror Representations (form in bid packet) signed by a principal of the firm or an officer authorized to bind the corporation.
- b. Qualifications to meet the City's objectives. This shall include size of the business, office location from which the service is being performed, and a list of project personnel and equipment assigned to the project.
- c. Prior work performed, including names and contact information for three professional references.
- d. Indicate and list any pending legal actions.
- e. Provide current copy of IRS Form W9.
- f. Outsourcing Statement: If your organization must outsource or subcontract any work to meet the requirements contained herein, this must be clearly stated in the proposal. Costs should be all-inclusive to include any outsourced or subcontracted work. Any proposals



REQUEST FOR PROPOSAL (RFP 10-19) BEACH MONITORING SERVICES

that call for outsourcing or subcontracting work must include the name, description, and contact information for the organization being subcontracted.

All contractual terms and conditions will be subject to review by the City of Folly Beach. This request does not commit the City to the award of a contract, or to pay any costs incurred in the preparation of a response to this request. The City of Folly Beach reserves the right to reject, in whole or in part, any bid submitted which, in the judgment of the City of Folly Beach, would not be in its best interest. The City also reserves the right to waive minor deficiencies or reject any or all proposals.

5. OTHER REQUIREMENTS OF THE CONSULTANT

If contract is awarded, Consultant must be prepared to provide and agree to the following, at his or her own expense, prior to beginning work and at all times during performance of services:

- a. Commercial General Liability Insurance on an occurrence basis in an amount equal to \$1,000,000 for each occurrence and must include the following coverages: (i) completed operations coverage, (ii) blanket contractual coverage, including both oral and written contracts, (iii) personal injury coverage.
- b. Worker's Compensation insurance to the statutory limits required by South Carolina state law.
- c. Automobile Liability Insurance \$1,000,000 combined single limit per accident for bodily injury and property damage.
- d. Maintenance of state and local licenses necessary to operate a business in the City of Folly Beach. These costs are not to be paid in whole or in part by the City.
- e. Indemnification and hold harmless documentation for any and all claims arising out of its performance of its duties under this contract.
- f. Compliance with all applicable federal, state and local laws, ordinances and regulations.
- g. The bidder selected will engage in a contractual agreement based on this proposal prior to any work being performed.
- h. Any modifications to the contract shall be in writing and signed by both parties.

6. PROPOSAL EVALUATION CRITERIA

The primary intent with regards to the procurement of these services is to obtain what the City would consider to be the best package of product and service. This includes overall proposal suitability, a clear and organized proposal, price competitiveness, quality, location of office, and timeliness and quality of previous work performed. Bidders will further be evaluated on their experience, qualifications, and references.



**REQUEST FOR PROPOSAL (RFP 10-19)
BEACH MONITORING SERVICES**

Vendor Name: _____

Offeror Representations

I certify that:

1. I am an agent of the company authorized to make representations on behalf of the company.
2. I have read and understand the solicitation.
3. I have not in any way colluded with anyone to obtain information that would give the me an unfair advantage over others or set pricing for the proposal.
4. I (alongside the Company) am qualified to perform the services required by the solicitation.

Authorized Signature for Bidder/Offeror & Date

Before me, the Undersigned, a Notary Public, for and in the County and State aforesaid, personally appeared _____ and made oath.

Sworn to and Subscribed before me

this ____ day of _____, 2019

Notary Public in and for South Carolina My
Commission Expires:



REQUEST FOR PROPOSAL (RFP 10-19)
BEACH MONITORING SERVICES

Attachment A:
2018 Operation & Maintenance Manual

OPERATION AND MAINTENANCE MANUAL
 SHORELINE PROTECTION PROJECT
 FOLLY BEACH, SOUTH CAROLINA
 TABLE OF CONTENTS

Contents

INTRODUCTION 1

1. PURPOSE 1

2. AUTHORIZATION 1

3. SCOPE OF PROJECT 1

4. LOCATION 1

5. HISTORY OF DAMAGE 2

6. PROTECTION PROVIDED 2

7. PLANS 2

GENERAL REGULATIONS 2

8. GENERAL RULES AND REGULATIONS 2

9. O&M ORGANIZATION 3

10. PERIODIC NOURISHMENT 3

11. OPERATION **Error! Bookmark not defined.**

12. REPORTS AND REPORTING 3

OPERATION AND MAINTENANCE 4

13. MAINTENANCE 4

14. MONITORING 5

15. INITIAL GOVERNMENT MONITORING 5

16. LOCAL SPONSOR MONITORING 6

17. SURVEILLANCE 6

18. ENCROACHMENT AND ALTERATION 6

19. EMERGENCY PREPAREDNESS 7

APPENDICES

- A. Engineer Regulation No. 1110-2-2902
- B. Local Cooperation Agreement
- C. Inspection Report Forms and Survey Sheets
- D. As-Built Drawings
- E. Coastal Council Monuments

INTRODUCTION

1. PURPOSE

This manual provides guidance to the City of Folly Beach, South Carolina (the non-federal sponsor) regarding its responsibilities for Operation, Maintenance, Repair, Replacement, and Rehabilitation (OMRR&R) of the Folly Beach Shore Protection Project consistent with Section 912(b)(1) of the Water Resources Development Act of 1986 (P.L. 99-662). The information provided herein is necessary for compliance with Article VIII of the Local Cooperation Agreement (LCA) and Engineering Regulation (ER) 1110-2-2902, "Prescribed Procedures for the Maintenance and Operation of Beach Erosion Control Works" prepared by the Department of the Army, Office of the Chief of Engineers (see Appendix A).

2. AUTHORIZATION

The Folly Beach Shore Protection Project was authorized by Section 501(a) of the Water Resources Development Act of 1986 (P. L. 99-662) and modified by Section 108 of the Energy and Water Development Appropriations Act of 1992(P.L. 102-104).

3. SCOPE OF PROJECT

The Project is the project generally described in the General Design Memorandum (GDM) of 1991, as modified by the Engineering Documentation Report (EDR) of 2005. The Project provides for a protective berm with a top width of 15 feet at an elevation of 9.0 feet National Geodetic Vertical Datum (NGVD), periodic nourishment over the life of the project, and the and rehabilitation/construction of of nine groins located north of the Folly Beach Pier. The Project runs from just below the former US Coast Guard Station (Stat 288+90) south to Charleston County Park (Sta. 0+00). Periodic nourishment does not extend past Sta. 10+00. The total project length is 28,890 or approximately 5.47 miles. Both ends of the project form natural transition areas. The area at the southern end of the project requires approximately 35 cubic yards of fill per foot. The northern end of the project will transition to elevation 4.5 NAVD88 (this corresponds to the height of the timber groin in this area) and to an approximate width of 50 feet at the timber groin.

4. LOCATION

Folly Beach is located about 12 miles south of Charleston, between Kiawah Island and Morris Island. Folly Island is separated from the mainland by the Stono Inlet (south), Lighthouse Creek (northeast), and the Folly River (north).

5. HISTORY OF DAMAGE

- a. A Section 111 study approved in 1988 determined that the Federal navigation project at Charleston Harbor was responsible for 57% of the erosion on Folly Beach. Since the construction of the Charleston Harbor jetties in 1896, the ebb tidal delta shoals protecting Folly Beach from wave attack migrated offshore of Morris Island. The jetties acted as a barrier to littoral sediment transport from the north, essentially starving Folly Island of sediment. This reduction of sediment supply has decreased the volume of material in Folly Island shoals and steepened offshore contours, thus increasing wave energy potential at the Folly Island shoreline and aiding in the increase of erosion rates along the island. As a result of the Section 111 study, the project cost share was authorized at 85% Federal and 15% non-Federal.
- b. Initial construction of the project was completed in 1993 at a cost of approximately \$9 million. Initial placement consisted of 738,500 cubic yards (cy) in the protective berm and 1,742,700 cy advanced nourishment plus overfill, for a total placement of about 2.5 million cy.

6. PROTECTION PROVIDED

The project was constructed to the National Economic Development primarily by providing storm damage reduction benefits to commercial and residential property. While not a basis for selecting the recommended plan, it is also recognized that the project provides recreational benefits. The Superintendent will develop a storm emergency plan to cope with storm events greater than the project design storm. The Department of the Army and the City of Folly Beach entered into a Local Cooperation Agreement (LCA) for this shore protection project on September 14, 1992 as required by Section 221 of Public Law 91-611. Article VIII of the LCS provides that the City of Folly Beach is solely responsible for OMRR&R after the completion of construction. A copy of the duly executed LCA is included in Appendix B.

7. PLANS

The as-built drawings showing the project immediately after construction are included in Appendix D.

GENERAL REGULATIONS

8. GENERAL RULES AND REGULATIONS

ER 1110-2-2902 in Appendix A proscribes procedures for the maintenance and operation of structures and facilities constructed by the United States for shore protection. To meet these rules, the City of Folly Beach must make adequate provisions for funds, personnel, equipment and materials to properly maintain and operate the protective works over its entire 50 year economic life.

9. O&M ORGANIZATION

The City of Folly Beach will appoint a Superintendent to directly oversee the organization responsible for the OMRR&R of the project as well as the proper function of the project and its structures. The organization shall be composed of persons experienced in engineering or construction practices who are familiar with the overall project, its individual components and their respective functions. The organization must be granted broad authority to perform its responsibilities and have unlimited access to the Project area. The name, business address and office and home telephone numbers of the duly appointed Superintendent, and any changes thereof, shall be furnished to the District Engineer, Charleston District, Corps of Engineers, upon appointment of the individual. The Superintendent and the organization shall be responsible for adhering to ER 1102-2-2902.

10. PERIODIC NOURISHMENT

Periodic nourishment is considered "construction" as that term is defined in paragraph 4 of ER 1110-2-2902 . Hence, periodic nourishment is eligible for cost sharing between the non-federal sponsor and the Government. The details of this cost sharing are described in the LCA.

Cost shared periodic nourishment will be initiated upon a mutual agreement between the Government and the non-federal sponsor with consideration of engineering and economic factors. An annual projection will be made of the time remaining until the next renourishment is required.

11. REPORTS AND REPORTING

The Superintendent shall maintain organized records of all inspections, surveys, monitoring and other costs associated with OMRR&R of the protective works. The number of inspections and surveys to be performed is discussed in SECTION III of this manual.

a. To assist the Superintendent in keeping organized records, inspection and survey forms have been developed and are contained in Appendix C. The Superintendent will be required to provide a brief report along with the inspection or survey form that covers the following points:

- (1) A description of the maintenance work performed in the preceding twelve month period including all associated costs.
- (2) The number and classification of persons that maintain the project on a regular basis and those that also work on it intermittently.
- (3) Description of any work performed by contract for the repair or

improvement of the project.

(4) Any other incidental information pertinent to the overall operation and maintenance of the project.

b. Every time an inspection or survey is performed, the Superintendent shall submit an inspection or survey form to the District Engineer. The procedure for submitting the forms is described in Article XVII of the LCA.

OPERATION AND MAINTENANCE

This section describes in detail the measures required for OMRR&R if the project.

12. OPERATION

To insure correct operation, it is essential that the Superintendent and at least one other person be familiar with all aspects of this manual and the protection works, as well as what supplies, personnel, and equipment are available for necessary OMRR&R under this manual. The non-Federal sponsor's responsibility for operation includes continuing oversight activities to assure that the beach design section provides storm damage reduction and promotes and encourages safe and healthful public enjoyment of the recreational opportunities provided by the beach fill. Operation activities would include protection of dunes, prevention of encroachments (see Encroachment, Development, and Alteration, below), monitoring of beach design section conditions (see Local Sponsor Monitoring, below), provision of lifeguards and beach patrols, and trash collection.

13. MAINTENANCE

- a. ER 1101-2-2902 (Appendix A) prescribes procedures for the maintenance of the project. To insure that the project functions properly, it will be necessary for the non-federal sponsor to provide constant maintenance. The organization responsible for its maintenance must be familiar with the overall project, its individual components and their respective functions.
- b. Maintenance needs should be determined through regular walking inspections of the entire project as well as the other periodic inspections outlined in this manual. The purpose of an inspection program is to detect any deterioration that would adversely affect the function of the works and to point out areas that are in need of repair or replacement.
- c. Protective berm. Prompt action will be taken to correct localized, excessive loss or gain of berm cross-section. This may include grading and reshaping the berm in order to move sand from areas of excessive accumulation to areas of depletion. Such maintenance activity shall be commenced wherever the berm elevation has dropped below +6 ft. NGVD for approximately two thirds of design

berm width (e.g. 10 ft.), for a continuous alongshore distance of 50 ft., unless the Government and non-federal sponsor agree that such activity will not yield sufficient benefit. The constructed berm shall be graded and reshaped as near as practicable to as-built cross section dimensions using available sand within the project design section. Drainage into the berm will be prevented. This provision does not apply when both parties agree that periodic nourishment is warranted.

- d. Sand fences and vegetation. The non-federal sponsor will preserve the integrity of the sand fences, and replace them when lost or damaged. Vegetation will be preserved and sustained, including by restricting foot traffic, ensuring that vegetation signs are properly located, and replanting where necessary.
- e. Groin maintenance. The Superintendent shall inspect the groins at intervals not to exceed 90 days. Bank caving, toe scour, or flanking erosion which endangers structure stability or function must be remedied, spot painting to prevent rusting, and areas of undue settlement or material loss must be filled. Items to look for on the groins are illustrated on the inspection forms located in Appendix C of this manual. These forms are to be submitted to the District Engineer as outlined in the Reports and Reporting section of this manual. The non-federal sponsor must maintain the groins to meet the 90 percent retention of sand up to the design elevation of beach fill (7.0NGVD) during the economic life of the project.

14. MONITORING

Monitoring as defined in the LCA will consist of performing beach profiles and aerial photography, sediment sampling, hydrographic surveys, tidal data, environmental data, engineering and design, and supervision and administration as generally described in the GDM. The Army Corps of Engineers was responsible for monitoring for the first three years after initial construction. The non-federal sponsor will then monitor the Project for the remaining period of the project life.

15. INITIAL GOVERNMENT MONITORING

During the three years after initial construction, the Army Corps of Engineers took monitoring surveys four times during the first year and semi-annually the second and third years. The surveys were taken from the 31 existing South Carolina Coastal Council monuments (see diagrams in Appendix E of this manual) established along Folly Beach as well as ten (10) additional monuments established for the Army Corps of Engineers extending south of the County Park to Bird Key at 750 foot intervals (See diagram in Appendix E of this manual). The survey lines taken from the Coastal Council monuments extended 3000 feet out into the ocean. The 10 additional survey lines between the county park and Bird Key will extend seaward 3000 feet from the baseline and landward or toward Folly River an additional 3000 feet or to the marsh – whichever comes first. Along with the surveys, aerial photography will also be performed for the project area and adjacent regions.

16. LOCAL SPONSOR MONITORING

- a. Paragraph 8.b.(1) of ER 1110-2-2902 describes the rules for the operation of the project including survey obligations.
- b. When the non-federal sponsor assumes monitoring responsibility, the Superintendent shall ensure that at least one complete set of profiles is performed each year prior to the onset of the storm season. Such surveys will coincide with the annual inspection of the beach berm and groins in the months of May or June. Surveys and inspections will also be performed after severe storm events. A severe storm event is defined as a storm causing erosion to the protective storm berm. The survey lines are to be taken from each of the 31 Coastal Council monuments described above. The 10 survey lines between the south end of the County Park and Bird Key will not be included. The beach profile lines will run perpendicular to the established baseline and extend seaward to low tide wading depth. The baseline and monument locations can be seen on the diagrams in Appendix E. The surveyor will fill out the survey sheet provided in Appendix C for submission to the District Engineer as outlined above (14. Reports and Reporting).
- c. The inspection will be performed by the Superintendent in accordance with the inspection form provided in Appendix C. The items that need to be documented by the Superintendent while conducting the inspection are outlined on the form. Photographs will also be taken during the course of the inspection to support the information provided on the form. The photographs (properly labeled) and the inspection forms will also be submitted to the District Engineer as specified above (14. Reports and Reporting)

17. SURVEILLANCE

The LCA requires a surveillance plan to determine when future nourishment must be accomplished to maintain the design level of protection. Surveillance is a shared cost, subject to the availability of funds, associated with periodic nourishment provided it is pursuant to the surveillance plan and included in future cost sharing projections. Federal participation in surveillance may include, for example, LIDAR capability. However, Federal participation in surveillance does not replace the local sponsor's monitoring obligation.

18. ENCROACHMENT, DEVELOPMENT, AND ALTERATION

- a. The City of Folly Beach will be responsible for preventing any encroachment on the Project. Any signs of encroachment will be reported to the District Engineer without delay. Unauthorized alterations by third parties shall be rectified or removed as an encroachment on the project.”

- b. Consistent with the LCA, Art. II.k., the City will ensure that appropriate non-federal regulations and safeguards are in place to prevent unwise future development and to ensure compatibility of development with the protection provided by the project. These include, without limitation, enforcement of an adequate setback of development from the perpetual easement line of the project, and the protection of the adjacent upland or dune areas to which the project ties-in. At the request of the District Engineer or of its own accord, the City will submit for review a complete list of actions taken and in force to confirm current fulfillment of these requirements.

- c. The Superintendent will ensure that no alteration is made to the project in any way without prior written approval from the District Engineer, Charleston District, in compliance with paragraph 8.a.4 of the ER and current requirements for 33 USC 408. The City will obtain prior written approval from the Corps of Engineers for any improvements or alterations to the project which it proposes to undertake or authorize, including on behalf of any other private or public party. The City shall furnish the District Engineer as-built drawings of the completed work and any other required documentation. All requests for approval shall be submitted in writing and be accompanied by two (2) complete sets of drawings, one set of which shall be in reproducible form, along with a full description of the intended work.

19. EMERGENCY PREPAREDNESS

Preparing for an emergency is also considered an integral part of the project operation. The Superintendent will develop a storm emergency plan to cope with storm events greater than the project design storm. The plan will an emergency source of sand source of sand and provide for the mobilization of required resources, equipment and personnel in case of an emergency. The plan will be activated whenever any major individual storm or sequential storms severely erode and threaten to or actually breach the protective berm to the extent that the backshore infrastructure and residential or commercial structures may be or are exposed to tidal flooding or direct wave attack.



REQUEST FOR PROPOSAL (RFP 10-19)
BEACH MONITORING SERVICES

Attachment B:
Appendix C of 1991 Local Cooperation
Agreement

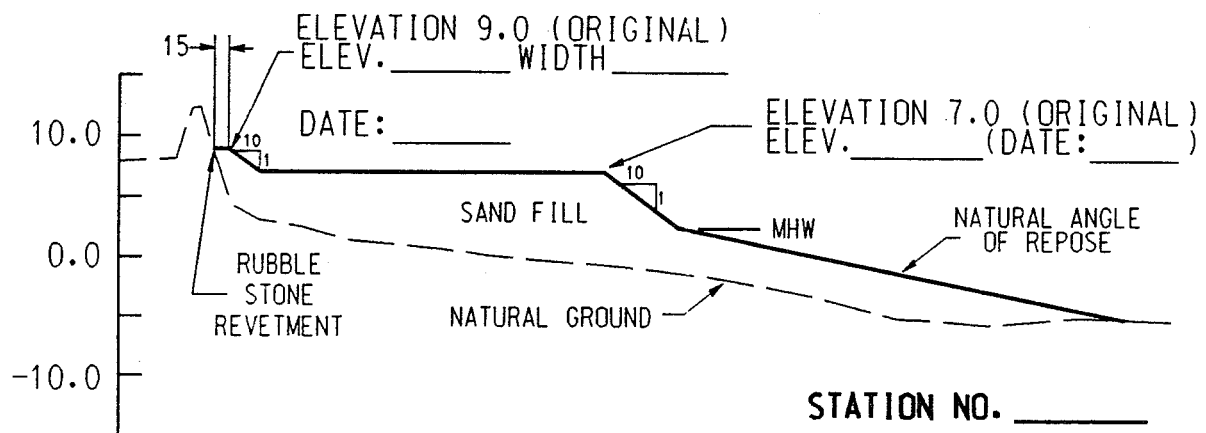
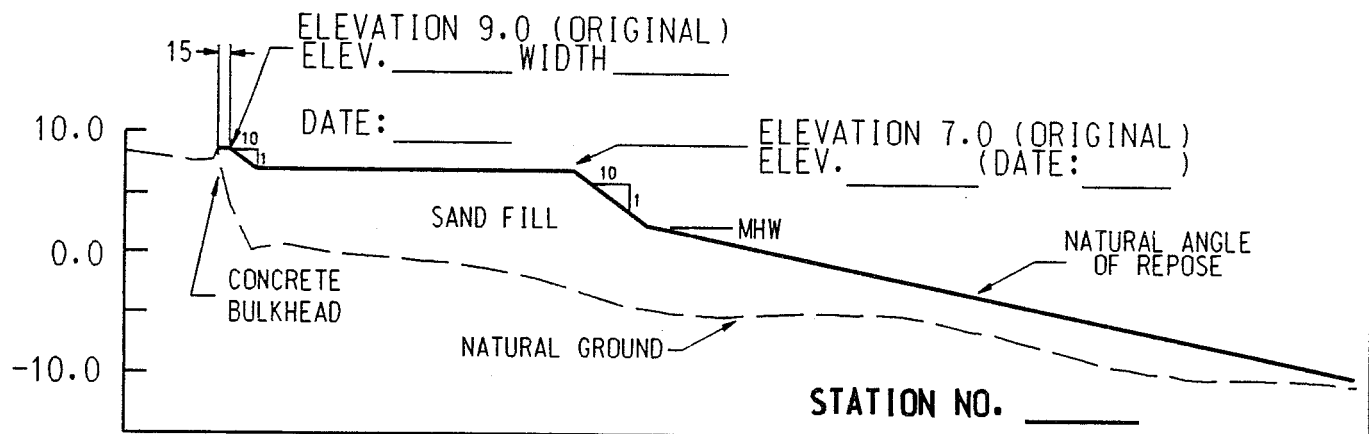
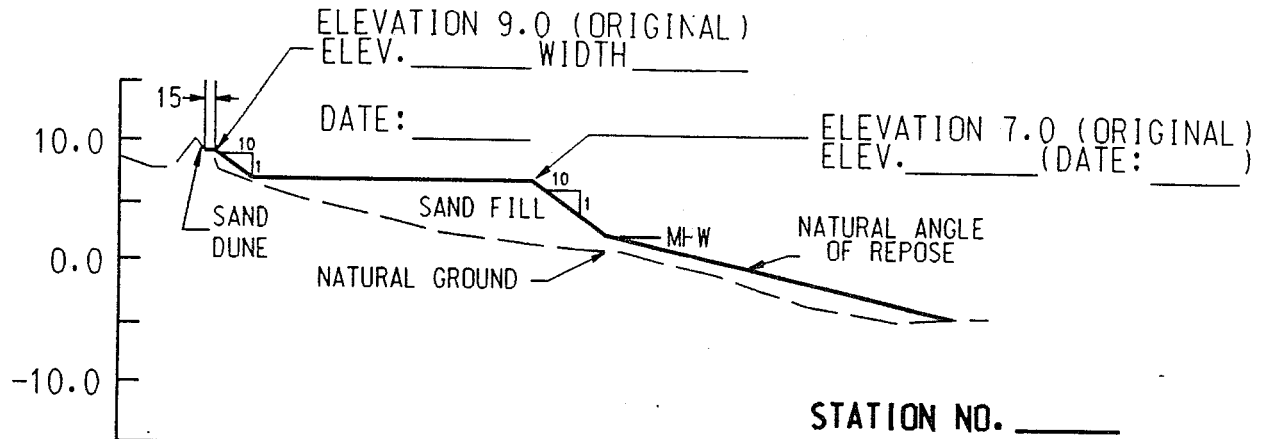
INSPECTION FORM
BEACH FILL & PROTECTIVE STRUCTURES
 FOLLY BEACH, SOUTH CAROLINA

Sheet 1 of 2

DATE OF INSPECTION: _____ MM/DD/YY	COMMENTS
<p>1. TYPE OF INSPECTION <input type="checkbox"/> Annual <input type="checkbox"/> Post Storm <input type="checkbox"/> Other (Comment)</p> <p>Note: Numbers 2. to 10. below are based on visual inspection. Where necessary qualify your response. Stationing is that as shown on the Monitoring Monuments (Appendix E).</p> <p>2. EROSION <input type="checkbox"/> YES <input type="checkbox"/> NO Sta. _____ To Sta. _____ Estimated Vol. (cy) _____</p> <p>3. ACCRETION <input type="checkbox"/> YES <input type="checkbox"/> NO Sta. _____ To Sta. _____ Estimated Vol. (cy) _____</p> <p>4. HAS AN ESCARPMENT DEVELOPED.. <input type="checkbox"/> YES <input type="checkbox"/> NO Sta. _____ To Sta. _____ Height (Feet) _____</p> <p>5. OVERTOPPING OF BERM DURING High Water..... <input type="checkbox"/> YES <input type="checkbox"/> NO Sta. _____ To Sta. _____ Estimated Depth of Overtopping (Feet) _____</p> <p>6. HAS ENCROACHMENT OCCURRED.... <input type="checkbox"/> YES <input type="checkbox"/> NO Was CHARLESTON DISTRICT Approval Obtained..... <input type="checkbox"/> YES <input type="checkbox"/> NO</p> <p>Date of Approval: _____</p> <p>Unauthorized (Comment)..... <input type="checkbox"/> YES <input type="checkbox"/> NO Type: Construction..... <input type="checkbox"/> YES <input type="checkbox"/> NO Vehicular..... <input type="checkbox"/> YES <input type="checkbox"/> NO Pedestrian..... <input type="checkbox"/> YES <input type="checkbox"/> NO</p>	

FOLLY BEACH, SOUTH CAROLINA

ELEVATION IN FEET (NGVD)



NOTE: PLOT NEW X-SECTIONS

INSPECTION FORM

DATE:

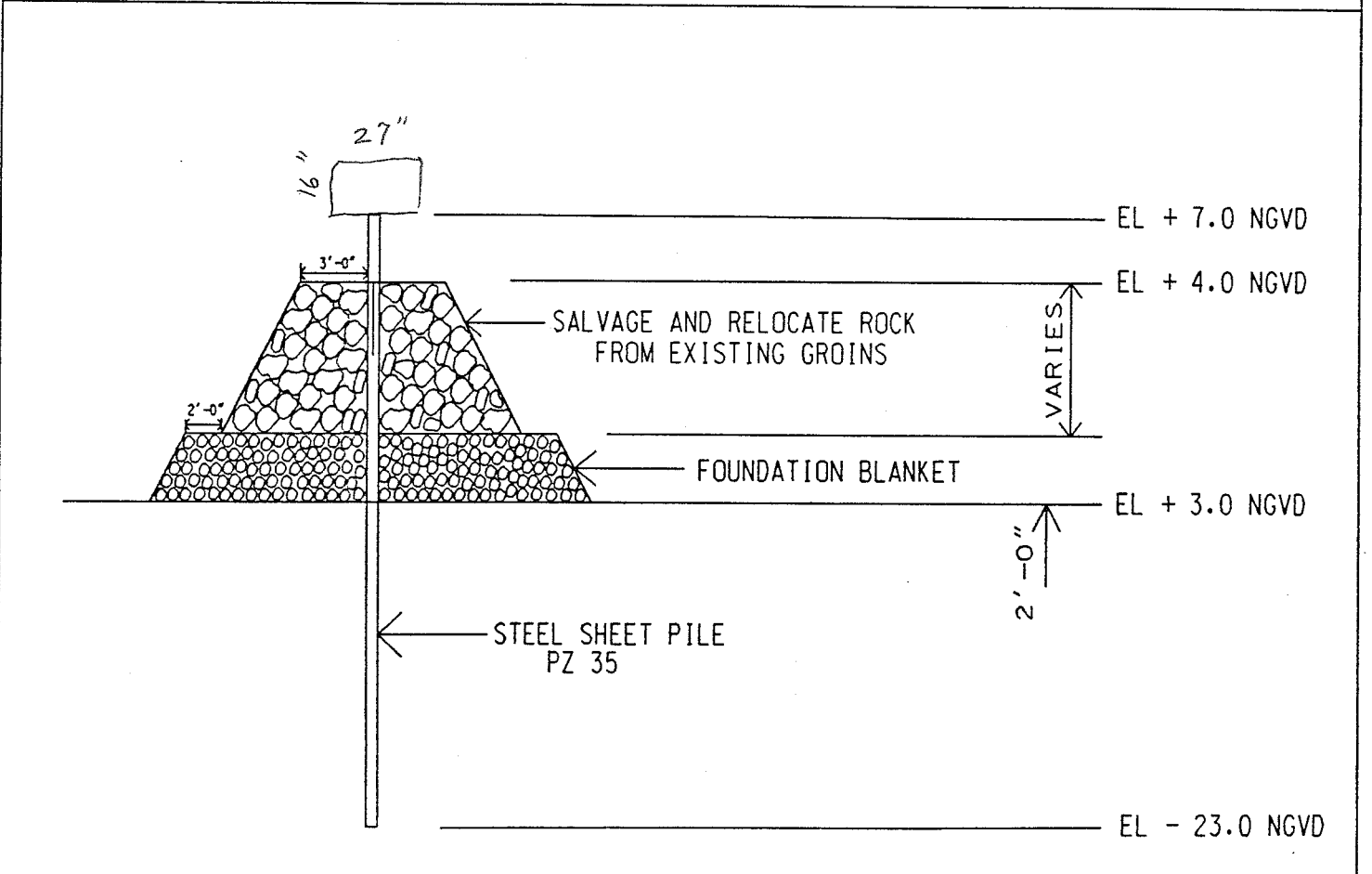
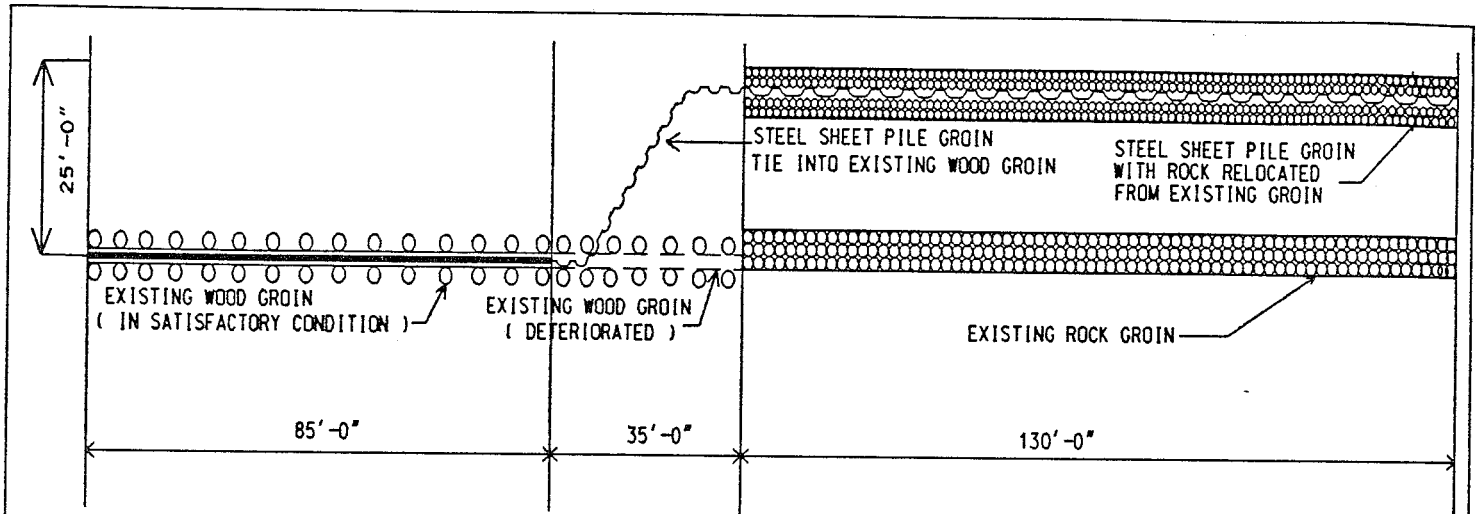
INSPECTION FORM
GROIN NO. _____ **STATION** _____
 FOLLY BEACH, SOUTH CAROLINA

Sheet 1 of 2

DATE OF INSPECTION: _____ MM/DD/YY	COMMENTS
<p>1. TYPE OF INSPECTION</p> <p><input type="checkbox"/> Annual <input type="checkbox"/> Post Storm <input type="checkbox"/> Other (Comment)</p> <p>Note: Numbers 2. to 6. below are based on visual inspection. Where necessary qualify response.</p> <p>2. BREACH/LOSS OF X-SECTION..... <input type="checkbox"/> YES <input type="checkbox"/> NO (Length _____ Width _____ Depth _____) <input type="checkbox"/> Displaced Armor Stone <input type="checkbox"/> Settling Armor Stone <input type="checkbox"/> Other (Comment)</p> <p>3. DAMAGE TO STEEL SHEETS..... <input type="checkbox"/> YES <input type="checkbox"/> NO (A) <input type="checkbox"/> Concrete Damage (Cracking, Chipping, etc.) (B) <input type="checkbox"/> Rust/Corroation (C) <input type="checkbox"/> Holes (D) <input type="checkbox"/> Other</p> <p>4. DAMAGE/STONE..... <input type="checkbox"/> YES <input type="checkbox"/> NO (A) <input type="checkbox"/> Displacement of Stone (B) <input type="checkbox"/> Settling (C) <input type="checkbox"/> Uplifting (D) <input type="checkbox"/> Other</p> <p>5. GENERAL DAMAGE TO STONE..... <input type="checkbox"/> YES <input type="checkbox"/> NO <input type="checkbox"/> Pitting <input type="checkbox"/> Spalling <input type="checkbox"/> Rounding <input type="checkbox"/> Cracking <input type="checkbox"/> Breaking <input type="checkbox"/> Other (Comment)</p>	

FOLLY BEACH

SOUTH CAROLINA



INSPECTION FORM

DATE: _____